



Ethanol Offloading Systems

General Description

Chemtec manufactures complete ethanol offloading systems to provide accurate measurement and accountability for inbound ethanol deliveries.

These systems are designed to offload up to four compartments simultaneously. The entire offloading process is controlled so that air doesn't enter the pump or meter, resulting in quiet and accurate operation.

Accurate, Reliable & Safe

The skids include off-loading arms, pump/motor, strainer, meter, control valve, and all other necessary hardware. The only field connections required are power, communications, and a piping connection to the ethanol storage tank.

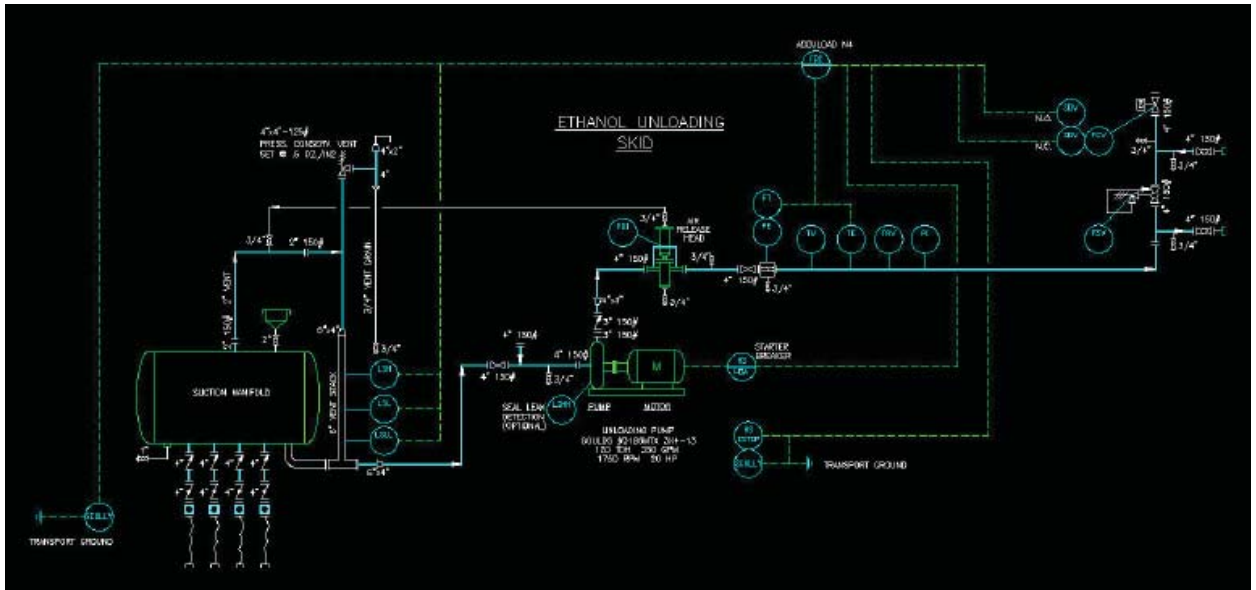
Why pay thousands of dollars to design your ethanol offloading system when Chemtec has a proven design that is accurate, reliable, and safe.



Features & Benefits

- Provides accurate measurement and accountability of inbound ethanol deliveries
- Complete system includes electrical, mechanical, & controls
- Quickly offloads trucks (up to 4 compartments simultaneously)
- Product "log" Eliminates air problems
- Hose support arms ensure safe hookup and removal of offloading hoses

Ethanol Offloading



Chemtec Energy Services, LLP
 11745 Cude Road
 Willis, Texas 77318 USA
 Phone: 936 856 1704
 Fax: 936 856 1669
www.ChemtecEnergy.com
sales@ChemtecEnergy.com



Chemtec Europe BVBA
 Klein Veerle 103 - bus 4
 2960 Brecht, Belgium
 Phone: +32 3 664 4735
 Facsimile: +32 3 664 3545
www.ChemtecEurope.com
sales@ChemtecEurope.com